



THE FORKLIFT

LEP

Lithium Ion Forklift 2.5 & 3.2 ton Capacity

Simple, Intuitive, Efficient.



www.clarkforklifts.com.au

A yellow and black Clark forklift is shown in a warehouse environment. The forklift is positioned on the right side of the frame, facing left. The background consists of tall metal shelving units filled with boxes, creating a sense of depth. The lighting is somewhat dim, highlighting the forklift's silhouette and the texture of the boxes. The overall scene is industrial and professional.

**LITHIUM ION FORKLIFT TRUCK OFFERING
COMPARABLE PERFORMANCE AND
RELIABILITY AS A CONVENTIONAL FORKLIFT.**

- **SMOOTH DRIVING**
- **SMOOTH BRAKING**
- **SMOOTH STEERING**

LI-ION
BUILT TO LAST



- ✓ LED work lights and strobe beacon for increased safety
- ✓ High strength over head guard for driver safety
- ✓ Low centre of gravity design for increased work stability
- ✓ Ergonomic lever arrangement reduces operator fatigue and maximises operator space



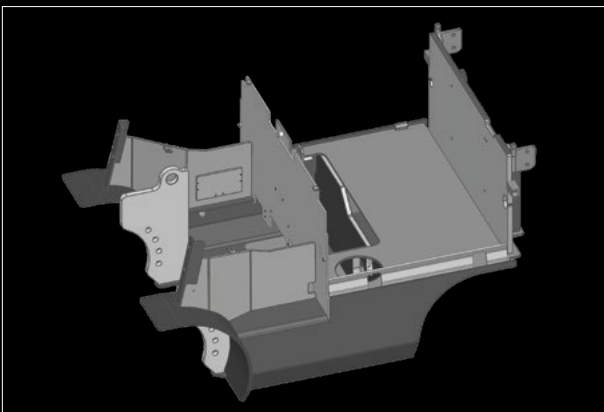
- ✓ Full colour dash with 4 driving modes
- ✓ CLARK suspension seat for operator comfort
- ✓ Safe entry and exit with boarding handle and anti-skid tape
- ✓ Ample storage space
- ✓ Modern aesthetic boasting CLARK green and easy to clean black hood

- Frame and mast with proven durability
- Stability of low centre of gravity design
- High performance AC controller



Proven High Strength Nested Upright

- Utilised the same proven I-beam mast technology used across the CLARK range.
- Designed to be stronger than conventional flat-faced rails
- Better resistance to side-to-side deflection with stiffer rail section.
- Promotes longer life and improved stability with elevated loads.

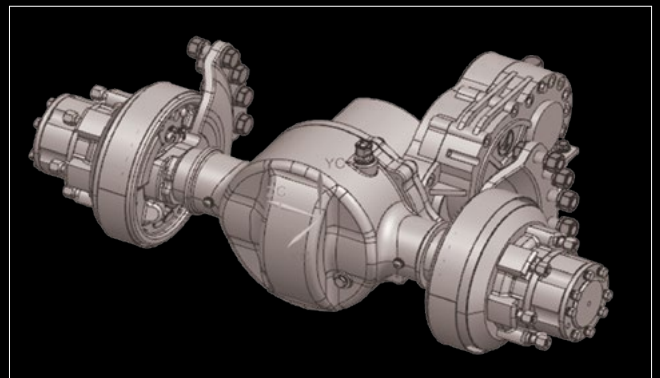


- Stable plate design for reliability and protection from impact damage.



100% AC Power American Curtis Controller

- Excellent acceleration performance and reduced forward/reverse direction change time
- High energy efficiency with regenerative braking system
- Improved battery continuous use time compared to DC motor
- Minimise maintenance cost as there are no brushes
- Suitable for all weather use



Low Centre of Gravity Drive Axle

- Enables stable work even when handling heavy loads



Water/Dust Protection Rating

- Travel motor (IP54) and hydraulic motor (IP44) water and dust protection rating.

Simple and Intuitive Operation

Suspension Seat

Greater Control and Lower Driver Fatigue

- With steering wheel knob and smaller sized wheel

4 Function Lever as Standard

- Additional function supplied as standard for various attachments
- Ergonomic lever arrangement reduces operator fatigue
- The driver's space is freed up by the cowl mounted levers

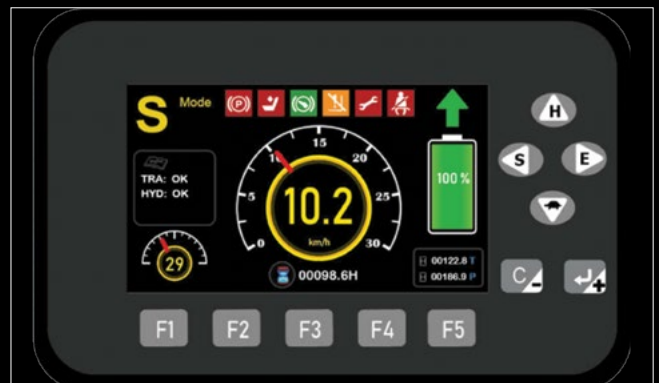
Full Colour LCD Display

- Can display and work to suit different applications by allowing 4 driving modes



Ample Storage Space

- Partition type storage space for convenience
- Cup holder included



Full Colour LCD Display as Standard

- Excellent readability with the full colour TFT LCD display
- Display the vehicle status through CAN-BUS communication with the controller
- Parameter modification/setting possible through display operation
- Increase efficiency with 4 driving modes to suit your requirements: H: High, S: Standard, E: Economy, T: Turtle



Anti-Roll Down Function

- For added safety, anti roll down function prevents roll back of the unit without the operator having to apply the brake.



Emergency Stop Switch

- Immediately cut the main power in the event of a dangerous situation



Grab Handle and Non-Slip Tape

- Reduces chance of operator slipping when boarding and disembarking



Equipped with Fall Limiting Valve

- Prevents uncontrolled descent of loads in event of damaged hydraulic hosing



Front and Rear LED Lights

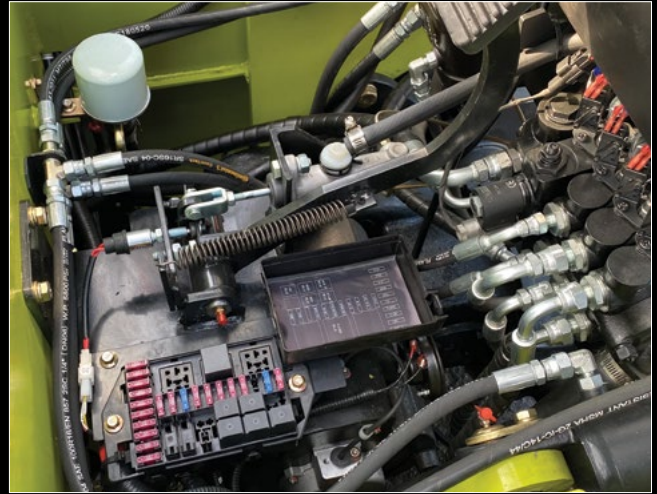
- Improved safety at night or in low light conditions with front and rear LED lights

Simple and Convenient Maintenance



Wide Angle Open Hood Cover

- Maximise maintainability and access to the battery



Fuse and Relay Concentrated Placement

- Easy inspection and repair as all fuses and relays are centralised (located at the bottom of the footrest)



Curtis Controller Application

- Diagnostics with the reliable Curtis controller
- Easily accessible through the rear panel

Lithium Iron Phosphate Battery as Standard

LI-ION
BUILT TO LAST

- Faster charge than standard lead acid battery.
- Ability to opportunity charge throughout the day to keep your machine running for longer
- Lower maintenance than standard lead acid battery with no water replenishing required.
- No dedicated charging room required as no gases are emitted

SAFETY FEATURES



Safety Blue Light

Helps prevent collision accidents by emitting a blue light on the floor to alert pedestrians when the forklift is nearby



Smart Seat Interlock

The forklift will only operate when the operator is seated and then connects the seatbelt.



Wide Angle Mirror (Optional)

Gain a wider view of the rear with the wide angle mirror.



Amber Beacon

Fitted as standard at the rear and below the overhead guard height.

Rear Work Light

Increased visibility with the rear mounted work light.

Rear View Camera (Optional)

Rear mounted camera and dash monitor to assist while reversing.

LEP25 & 32 Specifications

● LEP25 Mast Specifications

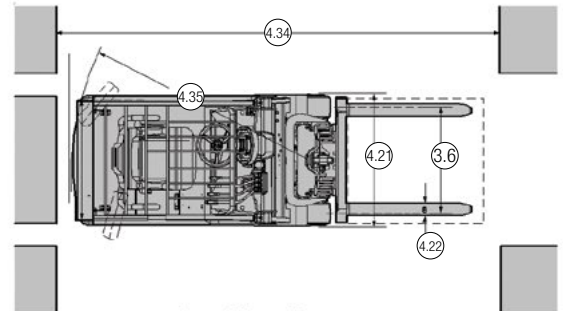
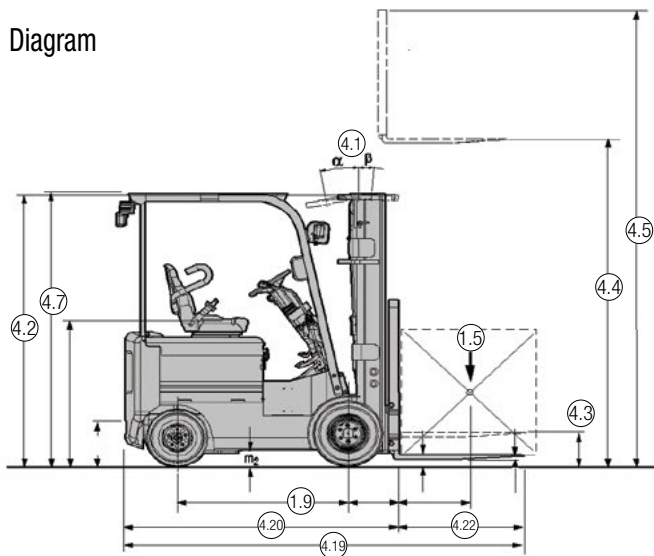
Type	Lift Height	Lowered Height	Max. Height of Mast		Freelift		Tilt		Load Centre (500mm)
			LBR (with)	LBR (without)	LBR (with)	LBR (without)	Forward	Back	LEP25
	mm	mm	mm	mm	mm	mm	deg	deg	kg
STD	3300	2165	4520	3898	110	110	6	10	2500
TSU	4800	2165	6019	5423	946	1542	6	5	2250

● LEP32 Mast Specifications

Type	Lift Height	Lowered Height	Max. Height of Mast		Freelift		Tilt		Load Centre (500mm)
			LBR (with)	LBR (without)	LBR (with)	LBR (without)	Forward	Back	LEP32
	mm	mm	mm	mm	mm	mm	deg	deg	kg
STD	3165	2180	4395	3842	115	115	6	10	3200
TSU	4620	2180	5843	5312	961	1492	6	5	2950

*The above specifications are subject to change without notice

● Diagram



$$Ast = Wa + X + 1000 + a$$

$$a = 200\text{mm (Safety distance)}$$

For data see corresponding number in chart "Product Specifications"

LEP25 & 32 Specifications

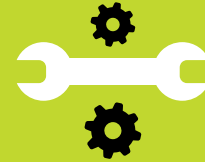
Specifications	1.1	Manufacturer		CLARK		CLARK	
	1.2	Manufacture's designation		LEP25		LEP32	
	1.3	Drive Unit		Elec-48V		Elec-48V	
	1.4	Operator type stand on / driver seated		Rider-seated		Rider-seated	
	1.5	Load Capacity / rated load	kg	2500		3200	
	1.6	Load Center distance	mm	500		500	
	1.8	Load Center distance, centre of drive axle to fork face	mm	475		480	
	1.9	Wheelbase	mm	1475		1600	
	WT	2.1	Service weight	kg	4120		4835
2.2		Axle loading, laden front / rear	kg	5750	870	7095	940
2.3		Axle loading, unladen front / rear	kg	1714	2406	2050	2785
Tyres, Chassis	3.1	Tire type, P=pneumatic, SE-superelastic, C=cushion		PNEU		PNEU	
	3.2	Tire size, front		7.00-12		28X9-15	
	3.3	Tire size, rear		18X7-8		18X7-8	
	3.5	Wheels, number front/rear (x=drive wheels)		2X/2		2X/2	
	3.6	Tread, front	mm	1000		1032.5	
	3.7	Tread, rear	mm	913		913	
	Dimensions	4.1	Tilt of upright/fork carriage, α / β	deg.	10	6	10
4.2		Height, upright lowered	mm	2165		2180	
4.3		Freelift	mm	110		115	
4.4		Lift height 1)	mm	3300		3165	
4.5		Height upright extended 2)	mm	4520		4385	
4.7		Height Overheadguard	mm	2224		2239	
4.19		Overall length	mm	3419		3649	
4.20		Length to face of forks	mm	2352		2582	
4.21		Width	mm	1190		1261	
4.22		Fork dimensions	mm	45X100X1067		50X122X1067	
4.23		Fork carriage ISO 2328, A, B		CL IIA		CL IIIA	
4.24		Fork carriage width	mm	1041		1041	
4.31		Ground clearance minimum, unladen	mm	135		150	
4.32		Ground clearance center of wheelbase	mm	135		150	
4.34		Right Angle Stack Aisle(1000x1200)	mm	3864		4061	
4.35	Turning radius	mm	2189		2381		
Performance	5.1	Travel speed laden/unladen	km/h	16	16.5	14.5	16.5
	5.2	Lift speed laden/unladen	m/s	0.36	0.48	0.26	0.44
	5.3	Lowering speed laden/unladen	m/s	0.55	0.50	0.47	0.43
	5.6	Max. drawbar pull laden/unladen	kg	1680	970	1380	824
	5.7	Gradeability laden/unladen	%	19		17	
	5.8	Max. Gradeability laden/unladen	%	21	20	17.5	20
Drive line	7.1	Type of battery		Lithium(LFP)		Lithium(LFP)	
	7.2	Maximum capacity of battery	AH/5hr	404		542	
	7.3	Minimum weight of battery	kg	989		1218	
	7.4	Power of drive motor	kW	11		11	
	7.5	Power of hydraulic motor	kW	15		15	
	7.6	Drive motor control		Mosfet Inverter		Mosfet Inverter	
	7.7	Speed control		Solid State		Solid State	
	7.8	Hydraulic motor control		Mosfet Inverter		Mosfet Inverter	
Misc.	8.1	Operating pressure for attachments	kg/cm ²	140		140	
	8.2	Sound level, ISO standard	dB(A)	72		72	

• Lift height based on a STD type mast.



GLOBAL PRESENCE

CLARK products are in operation all around the world. An estimated 350,000 units in operation currently!



RELIABLE SPARE PARTS SERVICE

CLARK has state of the art distribution warehouses in USA, South Korea, Brazil, China, Australia, Germany and Vietnam.



COMPREHENSIVE DEALER NETWORK

Over 550 sales & distribution partners in more than 90 countries ensure a high level of availability of our products and services.



EXCELLENT QUALITY

CLARK is the forerunner in high quality standards and innovative product developments.