



GEN2 Series



Diesel • LPG • Gasoline 2.0/2.5/3.0/3.5ton







The GEN2 Forklift has been developed with CLARK's leading edge technology.

The body is styled by US based industrial design specialist FITCH. The Millennium Forklift design is both stylish and elegant. With enhanced performance CLARK forklifts have evolved as the world's best. Rest assured that you are choosing the best when you choose CLARK.

CLARK's Gen2 series offers Superior Performance



Mast Bearing

Canted roller bearings reduce horizontal rail flex. The sealed roller bearings are permanently lubricated and ensure even distribution of the load to each bearing.



Tilt Angle of Mast

A mast tilt angle of 8° forward and 10° backward helps the easy and efficient loading and unloading of raw or finished material. When installing attachments, it is easy to select the correct tilt angles by exchanging spacers and rod end without replacing tilt cylinders.



Compact overall width to fit in to confined work areas

Greater adaptability to narrow work areas exists because of the compact overall width. It's effective in applications where you have not been able to previously use 3.5ton forklifts and where 3.0 ton forklifts provide insufficient load capacity. Excellent acceleration makes the C35 more efficient. It improves your work place productivity.



Superior Controllability

Brake system uses linings that have large contact surfaces. Auto-adjustment to allow for lining wear is standard. Effortless brake operation is provided by high quality friction pad material. A dust shield fitted to the brake system ensures superior brake operation in rainy or dusty environments and subsequently prolongs the life of the brakes. Also, a double action brake master cylinder increases the internal pressure by instantly providing large fluid flow. This helps reduce pedal travel and maintains smooth operation.

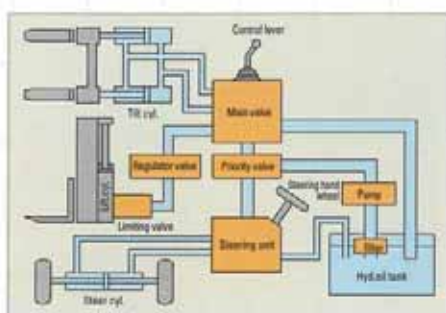
Excellent traveling capacity & stability

Offers rapid travel speed with the use of a wide track and large diameter drive tires.



High-tech Hydraulic System

The hydraulic fluid control valve and pump are assembled and installed as a single unit. This feature restricts over 90% of fluid flow in the unlikely event of steering failure. The implementation of a tilt lock valve (which stops tilt operation when the engine is not running) and an anti stall function in the main valve result in superior performance and enhanced safety.



The C35 has great potential in narrow or tight work environments because of its optimized compact size. In many applications where users need attachments such as in the chemical, paper manufacturing and the food & beverage industries.



CLARK's Gen2 series offers Ergonomic Design



Electrical Transmission

Electric transmission controls provide fingertip direction selection. Transmission direction is controlled by electric solenoids lessening maintenance and repairs.



Superior Vision

The high visibility upright featuring lift cylinders nested behind the mast rails and a high vantage point seating position provides for excellent driver visibility.



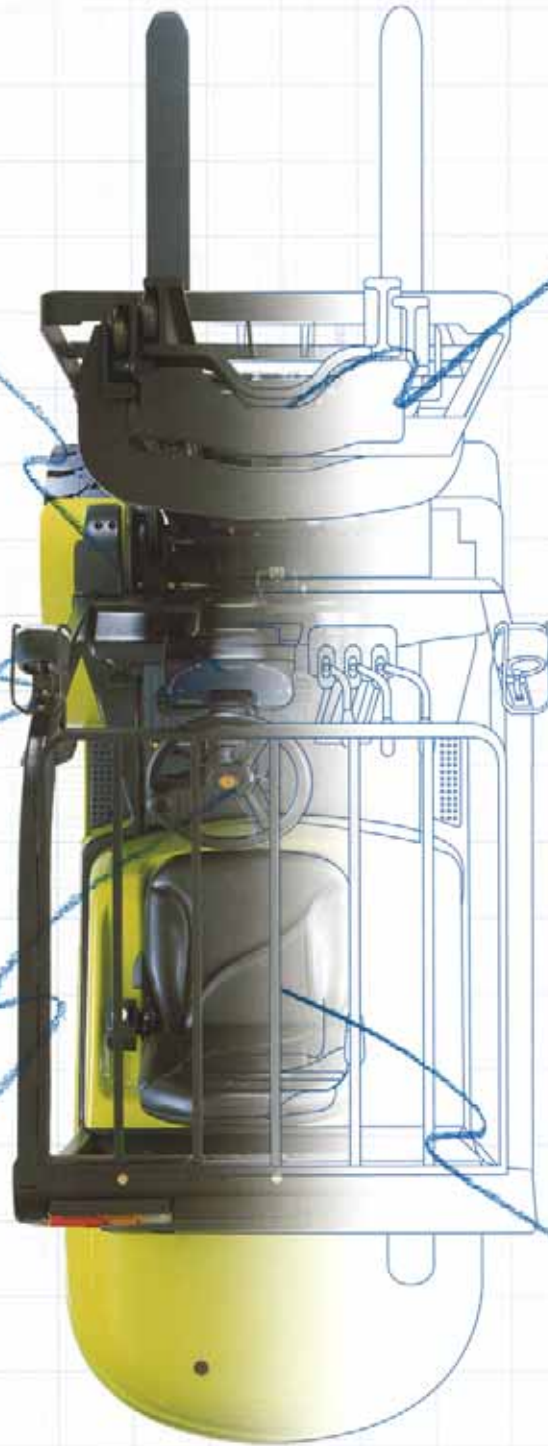
Halogen Headlight and Tail Lamp

Halogen headlights together with efficient tail lamps provide excellent illumination for indoor or night operation



Ergonomically Designed Steering Column

The steering wheel position can be adjusted to suit individual operator's requirements. Total range of adjustment is 38°.



Comfortable Driver's Compartment

A standard seat belt and optional side wings are provided for operator safety. Seat itself is adjustable forward and back-ward, total of 150mm movement, and the back support angle is also adjustable in 3 stage, each allowing 10° movement. A durable molded seat with adjust-able backrest, 150mm total horizontal movement and backpocket for storage of manuals and other documents is also standard. optional full suspension seat protects driver's back.



Centralized Instrument Dash Board

LED instrument cluster provides details of operational status, filter replacement and LPG fuel level.

- | | | |
|-------------------------------------|--------------------------------|----------------------------------|
| 1. Coolant temperature gauge | 7. Maintenance icon | 13. Seat belt pilot Lamp |
| 2. T/M oil temperature warning lamp | 8. Turn signal pilot lamp | 14. Parking brake pilot Lamp |
| 3. Hyd. oil filter warning lamp | 9. Hour meter | 15. Fuel gauge |
| 4. E/G oil pressure warning lamp | 10. Optional item working lamp | 16. Headlight switch |
| 5. Air filter warning lamp | 11. Optional item working lamp | 17. Rear light switch |
| 6. Battery discharge warning lamp | 12. Air preheating pilot lamp | 18. Selection switch of function |



CLARK's Gen2 series offers

Superior Durability



Strong Structure

Inter-locking uprights design utilizing specially rolled I-beam inner rails and c-channel section outer rails provide high strength under server load condition and provide greater tolerance with unbalanced load situations.



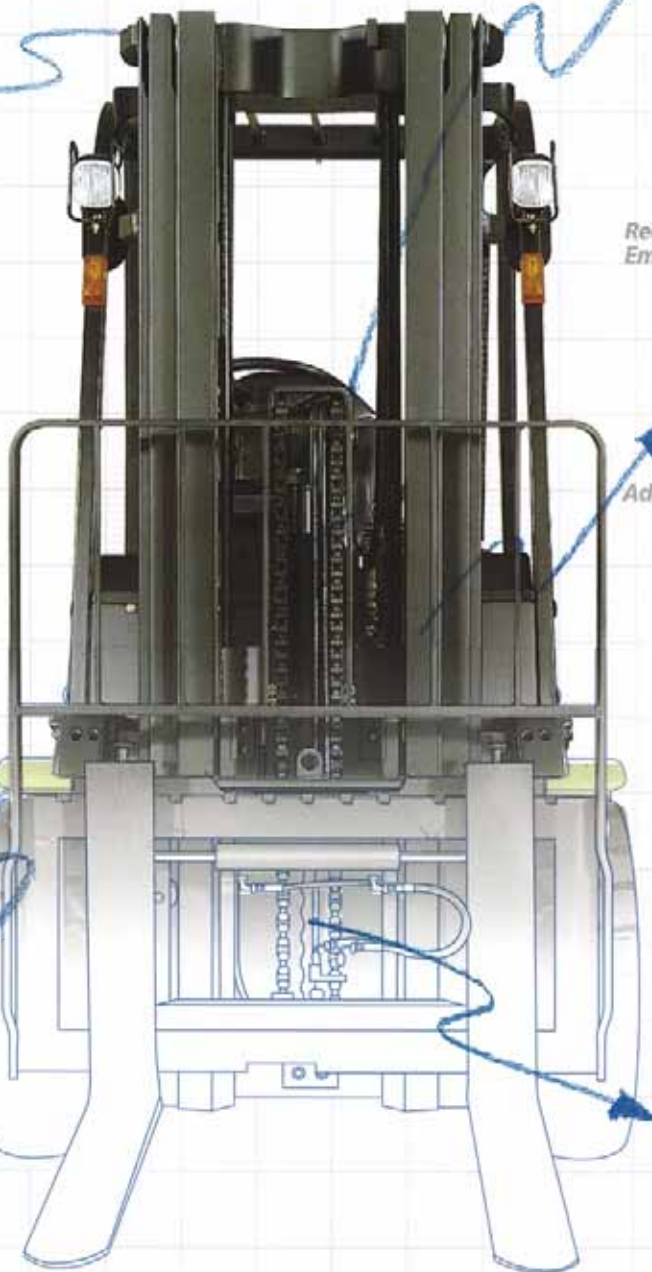
Higher strength mast

- Increased capacity fork bars provide more reliability and durability.
- Higher capacity lift chains.
- Revised stroke lift cylinders due to drive wheel tire size.



Hydraulic Steering System

Smoother steering is made possible with an all hydraulic steering system and the sturdy steering axle is fitted with a shock resistant system making driving more comfortable.



LPG Engine

The highly fuel-efficient Mitsubishi 4G64 LPG engine is fitted with an IMPCO Cobra LPG system providing an extremely high degree of reliability and excellent performance. An optional power-up system can increase the rated horsepower by 20% to meet the demands of high load and extreme working condition applications.

Reduced Emission



Advanced Power

Yanmar 4TNV94 Diesel engine

The Yanmar 4TNV94 Diesel DOHC engine comes complete with up-to-date design and modifications, ensuring the lowest harmful emissions like NOx, HC, CO, PM (Particulate Matter) which has a significant impact on humans, the environment and are classi-fied as probable human carcinogen. Clark's standard diesel engine meets any emission regula-tion in the world like EPA Tier2 and Euro stage 2. This industry proven engine will provide the highest reliability and performance than any other conventional diesel engines in its class.



Oil Cooler

Heat Exchange Efficiency is increased with a separate Oil cooler incorporated in the radiator. The radiator is maintainable without the need to disassemble the counterweight and an optional dust shield screen can be fitted in front of the radiator reducing the efficiency loss from dust build up. A shield is fitted around the fan to reduce noise and to enhance the cooling effect by reducing air loss. Also, a protection guard is fitted around the radiator fan for additional safety.

Transaxle

The TA-30 transaxle develop-ed by CLARK is exclusively designed for forklift use. Designed from engine to wheels in totality. For diesels, a high capacity torque converter is fitted as standard, making it the most powerful in its class. For LPG, when power-up engine option is used, the high capacity torque converter is also used.



High Strength One Body Frame

A one section frame made from high strength steel plate with the hydraulic oil tank on the right and the fuel tank on the left side completely protects the engine and axle from external shock.



CLARK's Gen2 series offers

Easy Repair Maintenance

Wide Opening Engine Hood

A layered floor plate enables the dis/assembly without use of tools for easy maintenance. A wide opening engine hood provides easy access for maintenance while a gas cylinder makes effortless opening and closing possible.



LPG Tank Option

Optional swing type makes it easy to remove and replace LPG tank.



Inching System

A Mechanical Inching System is fitted. This is less prone to failure than hydraulic types and greatly enhances reliability.



Easy Repair Maintenance

Designed for easy engine and transmission oil checks.

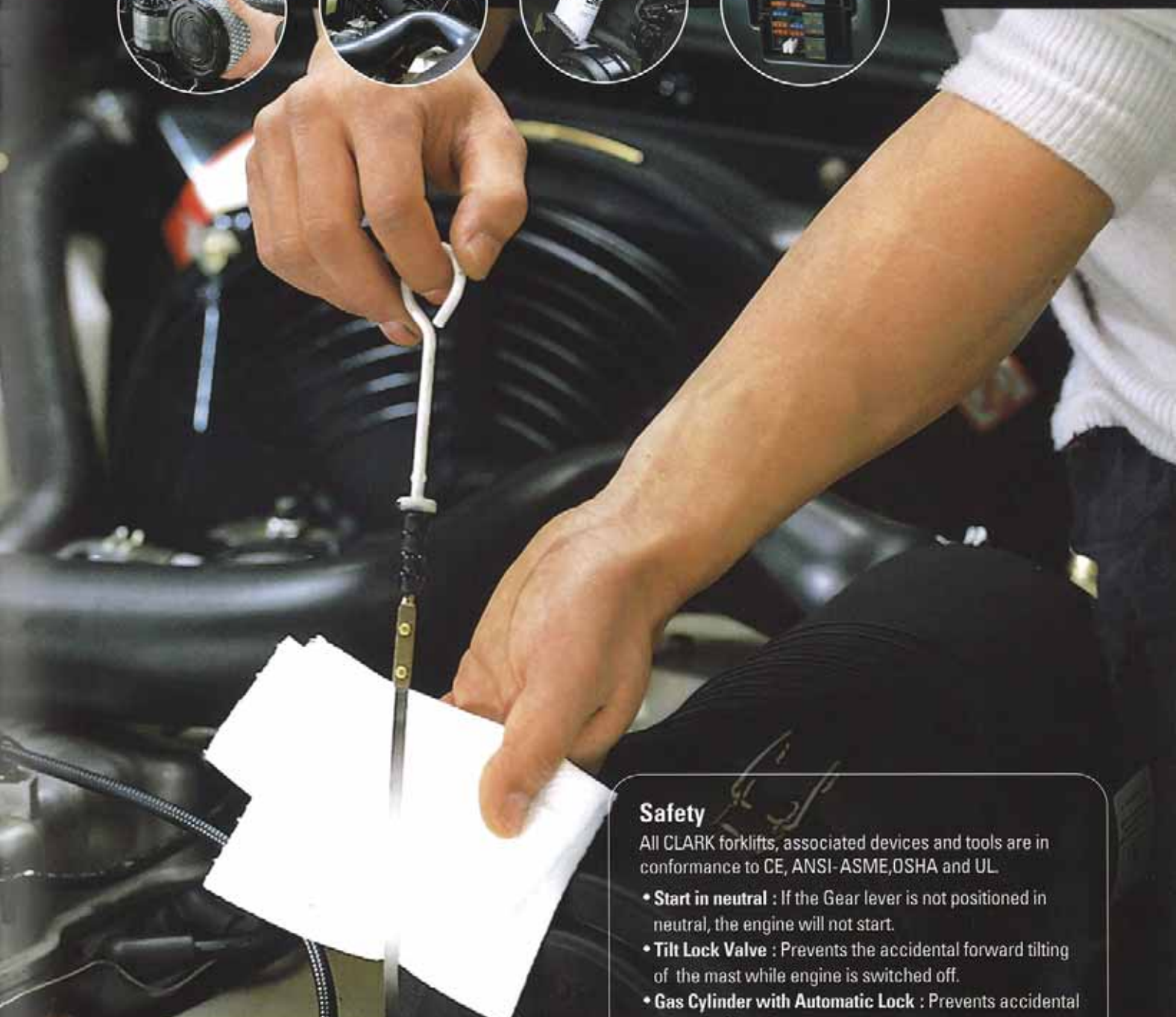


Lower ownership cost and economical maintenance costs

The C35 forklift will provide lower ownership cost compared to other 3.5ton forklifts. Fuel consumption is also very low for a truck of this capacity.



- ▶ **Air filter** is easy to maintain and replace; An additional safety filter can be fitted for operation in severe dusty environments.
- ▶ **The Radiator** can be repaired, maintained and replaced without disassembling the counter weight.
- ▶ **Spin-on filter for transmission and engine oil** for easy maintenance.
- ▶ **Fuse box** is placed next to foot pedal for easy access and checks.



Safety

All CLARK forklifts, associated devices and tools are in conformance to CE, ANSI-ASME, OSHA and UL.

- **Start in neutral** : If the Gear lever is not positioned in neutral, the engine will not start.
- **Tilt Lock Valve** : Prevents the accidental forward tilting of the mast while engine is switched off.
- **Gas Cylinder with Automatic Lock** : Prevents accidental closure of hood.
- **Safety valve** : Prevents accidental uncontrolled lowering in the event of oil pressure hose damage.
- Forward and reverse travel is not possible whilst the parking brake is in the on position.

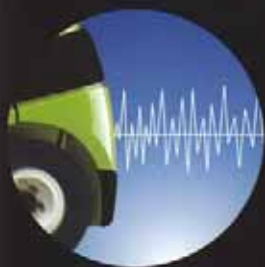
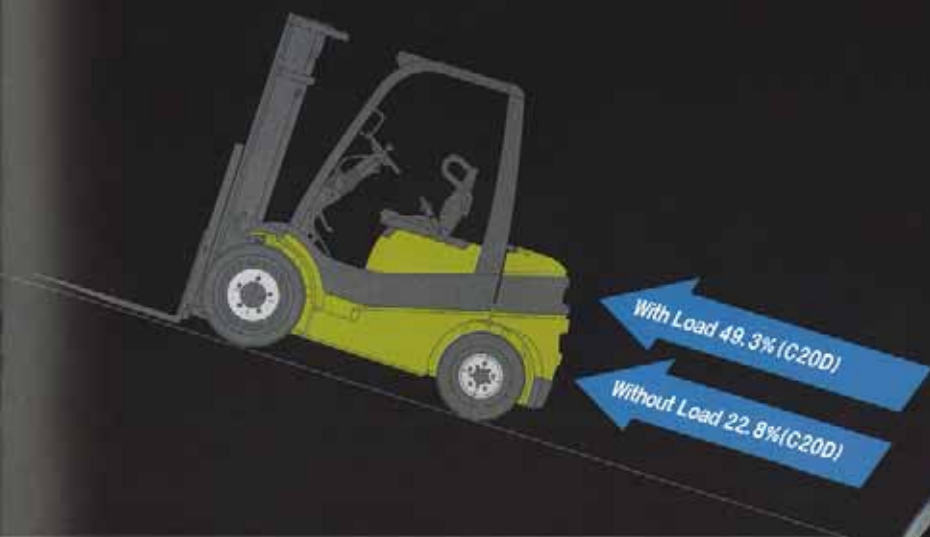
CLARK' s Gen2 series offers

Excellent Performance & High Productivity



The most versatile forklifts in the industry

Gen2 series C20/25/30/35 Model have gained an excellent reputation in the world market by achieving the best productivity. It makes your business more profitable with great performance with economic cost.



Shock Absorption System

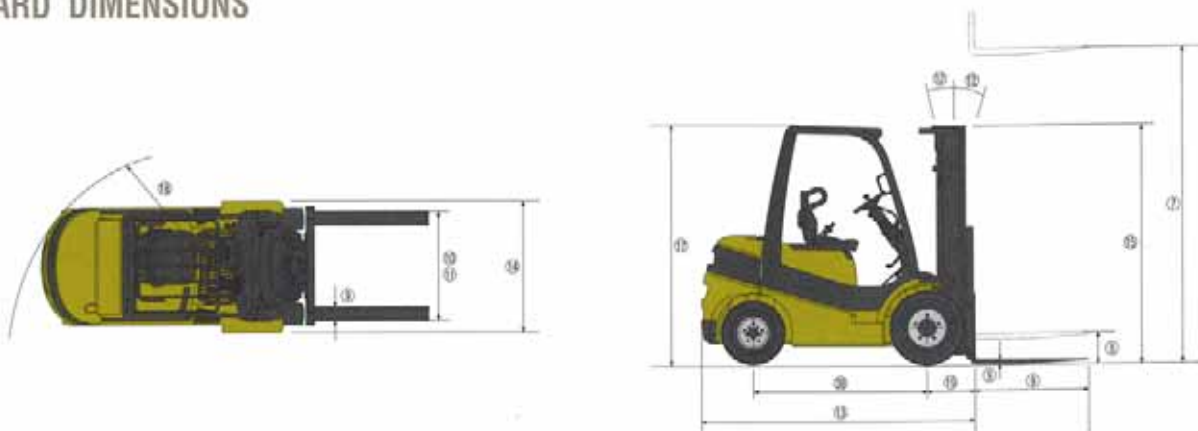
The driver's compartment is fitted with a shock absorption system that reduces vibration impact and engine noise(78dB). This ensures enhanced driver comfort and superior frame durability.

STANDARD SPECIFICATIONS

		MODEL		C 20D	C 20L	C 25D	C 25L	C 30D	C 30L	C 35D	C 35L	
CHARACTERISTICS	1	Load Capacity		2000		2500		3000		3500		
	2	Load Center		500								
	3	Power Type		Diesel	LPG	Diesel	LPG	Diesel	LPG	Diesel	LPG	
	4	Operator Position		Rider Seated								
	5	Tire Type		Pneumatic								
	6	Wheels (x = driven)		2 x/2								
DIMENSIONS	7	Maximum Fork Height (MFH)		3300						3165		
	8	Free Lift		110						115		
	9	Fork Size		45 x 100 x 1070				45 x 122 x 1070		50 x 122 x 1067		
	10	Fork spread (MIN x MAX)	Single Tire	270 x 989				316 x 1011		1020		
	11		Double Tire	270 x 1498				316 x 1520		1210		
	12	Tilt Range		FWD/BWD deg. 8/10								
	13	Length to Fork Face		2496		2558		2668		2770		
	14	Overall Width		1187				1237		1290		
	15	Height		Mast Lowered 2165				Mast Extended 2180		Overhead Guard 2200		
	16	Height		Mast Lowered 2165				Mast Extended 4519		Overhead Guard 4384		
	17	Turning Radius (Outside)		2245		2300		2405		2480		
	18	Load Distance		455				481		481		
	19	Basic Right Angle Stack Aisle		2700		2755		2860		2955		
	PERFORMANCE	21	Speed	Travel Max.	With Load	19.4	20.3	19.5	20.1	20.5	20.2	21.4
22		Without Load			20.3	20.9	20.4	20.5	21.4	21.0	21.9	22.3
23		Lifting	With Load	560	490	550	480	540	470	530	510	
24			Without Load	650	550	650	550	650	550	650	650	
25		Lowering	With Load	450								
26			Without Load	450								
27	Max. Drawbar Pull	With Load	2489	1614	2630	1622	2531	1466	2102	1500		
28		Without Load	1056	1050	1012	980	1061	1025	1034	999		
29	Max. Gradeability	With Load	49.3	30.6	44.5	25.6	36.4	20.5	26.7	19.0		
30		Without Load	22.8	29.5	20.0	25.5	19.1	22.9	17.0	16.4		
WEIGHT	31	Total Weight		3575	3465	3915	3805	4345	4235	4782	4672	
	32	Axle Loading	With Load	Front	4913	4876	5636	5599	6426	6386	6898	6857
	33			Rear	862	589	779	706	919	849	1184	1115
	34		Without Load	Front	1734	1897	1862	1625	1741	1701	1705	1665
	35			Rear	1841	1768	2253	2180	2604	2534	3077	3007
CHASSIS	36	Tires	Size	Front	7.00 x 12-14 PR				28 x 9 x 15-14 PR		250 x 15-18 PR	
	37			Rear	6.00 x 9-10 PR				6.50 x 10-12 PR		6.50 x 10-14 PR	
	38	Wheelbase		1620				1700				
	39	Tread	Front	994				1028		1050		
	40		Rear	904				912		170		
	41	Ground Clearance	At Lowest Point (Mast)		135				150		170	
	42		Frame		155				165			
	43	Brake	Service (Foot)		Drum							
	44		Parking		Foot							
	ENGINE AND TRANSMISSION	45	Battery		V/Ah	12/100	12/60	12/100	12/60	12/100	12/60	12/100
46		Maker/Model		-	Yanmar/4TNV94	MMC/4G64	Yanmar/4TNV94	MMC/4G64	Yanmar/4TNV94	MMC/4G64	Yanmar/4TNV94	MMC/4G64
47		Rated Horsepower / r.p.m		SAE HP	59.8 / 2500	44.0 / 2200	59.8 / 2500	44.0 / 2200	59.8 / 2500	44.0 / 2200	59.8 / 2500	50.0 / 2640
48		Maximum Torque / r.p.m		kg-m	21.9 / 1000	15.8 / 1400	21.9 / 1000	15.8 / 1400	21.9 / 1000	15.8 / 1400	21.9 / 1000	15.8 / 1400
49		Number of Cylinder		-	4							
50		Piston Displacement		cc	3054	2350	3054	2350	3054	2350	3054	2350
51		Fuel Tank Capacity		-	46.1 l	15kg	46.1 l	15kg	46.1 l	15kg	51.9 l	15kg
52		Transmission		Type	Power Shift							
53		Stage		FWD/RVS	1 / 1							
54		Operating Pressure		For Attachments	kg/cm ² Adjustable							

• Materials and specifications are subject to change without notice.

STANDARD DIMENSIONS

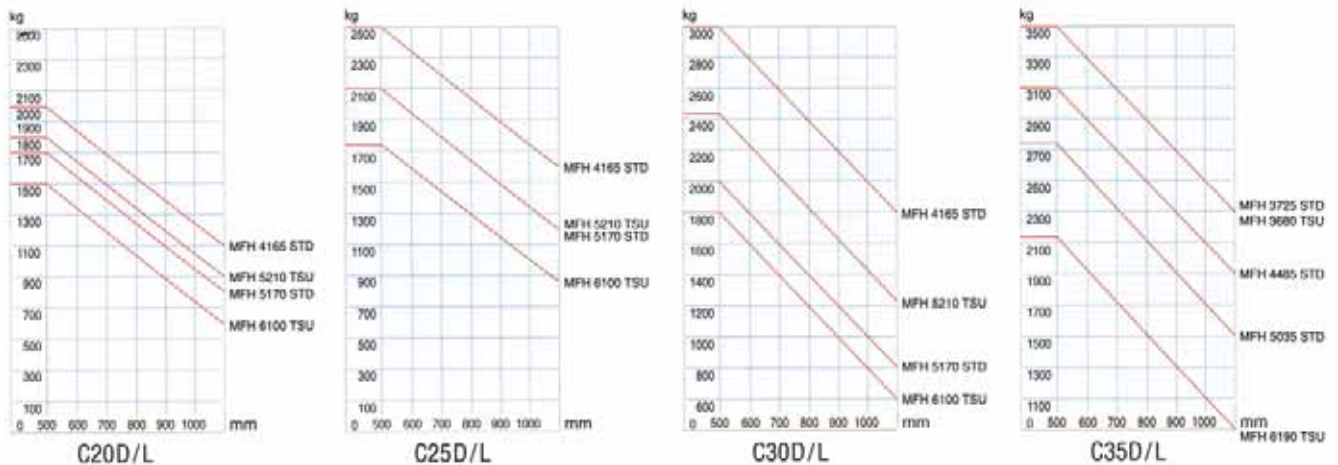


MAST SPECIFICATIONS & RATED CAPACITIES

Mast Type	Maximum Fork Height	Overall Height of Mast				Free Lift		Tilt Range		Load Capacity at 500mm		
		Mast Lowered	Mast Extended		With LBR	Without LBR	FWD deg.	-BWD deg.	C20D/L kg	C25D/L kg		
			mm	mm							mm	mm
2.0 ~ 2.5 ton	2Stage Mast	2120	1575	3339	2717	110	110	6	10	2000	2500	
		2680	1855	3899	3277	110	110	6	10	2000	2500	
		2980	2005	4199	3577	110	110	6	10	2000	2500	
		3300	2165	4519	3897	110	110	10	8	2000	2500	
		3725	2455	4944	4322	110	110	10	8	2000	2500	
		3860	2530	5079	4457	110	110	10	8	2000	2500	
		4165	2800	5384	4762	110	110	5	6	2000	2500	
		4380	3000	5599	4977	110	110	5	6	1900	2300	
		4620	3230	5839	5217	110	110	5	6	1850	2200	
		5170	3495	6389	5767	110	110	5	3	1800	2100	
	3Stage Mast	3860	1855	5079	4483	636	1232	5	6	2000	2500	
		4320	2005	5539	4943	786	1382	5	6	2000	2500	
		4800	2165	6019	5423	946	1542	5	6	1850	2200	
		5210	2305	6429	5823	1086	1682	5	3	1800	2100	
		5520	2455	6739	6133	1236	1832	5	3	1700	2000	
		5740	2530	6959	6343	1311	1907	5	3	1600	1850	
		6100	2690	7319	6663	1471	2067	5	3	1350	1750	
		6370	2800	7589	6723	1581	2177	3	3	1550	1800	
		6830	3000	8049	6993	1781	2377	3	3	1450	1700	
		7315	3230	8534	7453	2011	2607	3	3	1350	1600	
	Hi-Lo Mast	2935	2005	4154	3558	786	1382	8	10	2000	2500	
		3255	2165	4474	3878	946	1542	8	10	2000	2500	
		3530	2305	4749	4153	1086	1682	10	8	2000	2500	
		3760	2455	4979	4383	1236	1832	10	8	2000	2500	
		3910	2530	5129	4533	1311	1907	10	8	2000	2500	
	3.0 ton	2Stage Mast	2120	1590	3339	2787	110	110	6	10	3000	3000
			2680	1870	3899	3347	110	110	6	10	3000	3000
			2980	2020	4199	3647	110	110	6	10	3000	3000
			3300	2180	4519	3967	110	110	10	8	3000	3000
			3725	2470	4944	4382	110	110	10	8	3000	3000
3860			2545	5079	4527	110	110	10	8	3000	3000	
4165			2815	5384	4832	110	110	5	6	3000	3000	
4380			3015	5599	5047	110	110	5	6	2800	2800	
4620			3245	5839	5287	110	110	5	6	2550	2550	
5170			3510	6389	5837	110	110	5	3	2200	2200	
3Stage Mast		3860	1870	5079	4549	651	1181	5	6	3000	3000	
		4320	2020	5539	5009	801	1331	5	6	3000	3000	
		4800	2180	6019	5489	961	1491	5	6	2700	2700	
		5210	2320	6429	5889	1101	1631	5	3	2450	2450	
		5520	2470	6739	6209	1251	1781	5	3	2300	2300	
		5740	2545	6959	6429	1326	1856	5	3	2250	2250	
		6100	2705	7319	6789	1486	2016	5	3	2000	2000	
		6370	2815	7589	7059	1596	2126	3	3	2250	2250	
		6830	3015	8049	7519	1796	2326	3	3	2150	2150	
		7315	3245	8534	8004	2026	2556	3	3	2050	2050	
Hi-Lo Mast		2935	2020	4154	3624	801	1332	8	10	3000	3000	
		3255	2180	4474	3944	961	1492	8	10	3000	3000	
		3530	2320	4749	4219	1101	1632	10	8	3000	3000	
		3760	2470	4979	4449	1251	1782	10	8	3000	3000	
		3910	2545	5129	4599	1326	1857	10	8	3000	3000	
3.5 ton		2Stage Mast	1985	1610	3204	2723	115	115	10	6	3500	3500
			2524	1890	3764	3283	115	115	10	6	3500	3500
			2845	2040	4064	3583	115	115	10	6	3500	3500
			3165	2200	4384	3903	115	115	8	10	3500	3500
			3590	2490	4809	4328	115	115	8	10	3500	3500
	3725		2565	4944	4463	115	115	8	10	3500	3500	
	4030		2835	5249	4768	115	115	6	6	3350	3350	
	4245		3035	5464	4983	115	115	6	6	3150	3150	
	4485		3265	5704	5223	115	115	6	6	3100	3100	
	5035		3530	6254	5773	115	115	3	3	2750	2750	
	3Stage Mast	3680	1890	4899	4418	671	1127	6	5	3500	3500	
		4140	2040	5359	4878	821	1277	6	5	3300	3300	
		4620	2200	5839	5358	981	1437	6	5	3000	3000	
		5030	2340	6249	5768	1121	1577	3	5	2750	2750	
		5340	2490	6559	6078	1271	1727	3	5	2700	2700	
		5560	2565	6779	6298	1346	1802	3	5	2500	2500	
		5920	2725	7139	6658	1506	1962	3	5	2300	2300	
		6190	2835	7409	6928	1616	2072	3	5	2150	2150	
		6650	3035	7869	7388	1816	2272	3	5	1750	1750	
		7135	3265	8354	7873	2046	2502	3	3	1350	1350	

- Materials and specifications are subject to change without notice.
- For more safety when you order high MFH masts, you are strongly recommended to keep the following Suggestions:
 - +4830mm MHF masts must be used with wide drive tire order.
 - +6274mm MHF masts must be used with dual drive tire order

LOAD CAPACITY CHART





CLARK specializes in manufacturing forklift trucks.

CLARK provides the first class quality and service. For more than 80 years, CLARK has been setting the industry standard for on-the-job performance, reliability and durability in material handling equipment.

CLARK

Worldwide Headquarter :

CLARK Material Handling International
202-1, Ojung-dong, Ojung-gu, Bucheon city, Gyuggi-Do, Korea 421-270
Tel : 82-32-680-6300 Fax : 82-32-680-6369

© 2004 CMHI C20/25/30/35(D/L/G) - 0408

**CMHA ISO 9001/
14001 QUALITY**

CMHA relentless pursuit of high quality and environmentally friendly standards has resulted in ISO 9001/14001 certification for design, development, production, installation and service of Forklifts.

