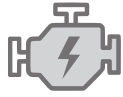


GTS20-33



**FORKLIFT TRUCK WITH
DIESEL OR LPG DRIVE**
2000KG - 3300KG CAPACITY



Ergonomic driving position
with hood mounted levers

Wet disc brakes
for a strong braking effect

Split transmission
for smooth driving

Excellent visibility and
mast damping system

Solid and proven construction



FORKLIFT TRUCK WITH DIESEL OR LPG DRIVE **GTS20-33**

Efficient counterbalance trucks featuring high performance levels at a low total cost

Solid construction and high-quality components make the GTS-Series extremely durable. Wet disc brakes as standard and a split transmission make this series extremely robust and reliable. With mounted hydraulic levers on the hood and plenty of legroom for the driver, this forklift is suitable for intensive applications.

Maintenance costs of the GTS are extremely low which has a positive effect on the total cost of ownership of the truck. The GTS-Series is suitable for a wide range of applications in distribution, production or warehousing.



Powerful HMC LPG or Yanmar Diesel industrial engines

Powerful acceleration and reliable operation are ensured by powerful industrial engines. The GTS trucks are available in diesel or LPG versions.



Ergonomic operator's compartment with plenty of legroom

Ergonomic driver's workplace that offers the driver plenty of head and legroom. Predictable controls and the hydraulic power steering ensure intuitive operation and a high level of safety during application.





Hood mounted levers

The truck is operated via ergonomically positioned hydraulic levers on the hood of the truck.



Safe entry and exit

The driver can reach an ergonomic seat comfortably and safely via a large, low-set and non-slip step. The footwell is generously designed so that the driver has enough space even when wearing safety shoes.



Excellent visibility

The uprights are available in Standard and Triplex versions. Thanks to the nested mast profile, the operator has a very good view through the upright. The heavy-duty, nested mast profiles provide high strength even with heavy loads.



Maintenance-free wet disc brake

The capsuled and oil-cooled wet multi-disc brakes ensure smooth operation. Compared to drum brakes, up to 50% less effort is required with wet disc brakes. In addition, there is limited downtime for maintenance, so there are lower maintenance costs for the brakes as it would be for drum brakes. Another advantage is that dusty or wet environments have no negative effect on the brake performance of these encapsulated multi-disc brakes. In contrast to drum brakes, wet disc brakes also have the best braking effects in harsh environments.

Mast damping system

For low-vibration lifting operations, the GTS is equipped with mast damping as standard. During lifting operations, the smooth transfer between the individual mast profiles is ensured. This protects both the goods and the mast components.



FORKLIFT TRUCK WITH DIESEL OR LPG DRIVE **GTS20-33**

The optional features of the GTS with cabin:

- »» Air conditioning system
- »» Two or single piece doors
- »» Sliding window
- »» Front and rear wind-screen with wipers
- »» Heated rear window
- »» Storage box



Optional operator's cabin: From rain protection to a fully featured cab with air conditioning

Various cab types are available for the driver's compartment of the GTS-Series. To ensure that you get the right solution for your application, the following options are offered:

- Rain protection (roof only)
- Weather protection (roof and windscreen)
- Partial cabin (roof, front window and side and rear plastic curtains)
- Fully equipped cabin

The full cab with two-part driver's doors can be opened by 180° and fixed to the cab frame. This allows operating these trucks with open doors, for example during summertime.

A heated rear window, easily accessible storage compartments, and a radio with Bluetooth function complete this comfortable, full cab.

Well-informed at all times:

The operator display of the GTS-Series does not require a lot of text and is easily understandable including simple error indication.



CLARK Forklifts are “Built to Last”

CLARK Forklifts are extremely robust and durable. Only durable and already proven components are installed in the CLARK GTS-Series. With these durable items, the maintenance costs can be kept extremely low to reduce the overall costs.

Wet disc brake

- Up to 50% less effort
- Maintenance free
- Strong braking effect even in wet or dusty environment

Robust mast construction

- Nested mast profiles
- 6-roller fork carriage as standard

High residual load capacity

- Low centre of gravity
- Available with wide or dual tyres as an option that ensures safe transportation of wide loads



Split transmission

- Reduces vibrations at the driver's seat
- Ensures a smooth ride



Robust steering axle

- Sturdy vibration-free mounted steering axle



FORKLIFT TRUCK WITH DIESEL OR LPG DRIVE **GTS20-33**



Optional safety features:

- ▶▶▶ Speed limiting
- ▶▶▶ Rear LED worklights
- ▶▶▶ Blue LED warning lights and HALO light systems
- ▶▶▶ Rear view camera
- ▶▶▶ Hydraulic accumulators ensure that loads do not bounce even on uneven floors to prevent loads from bouncing.



Optional CLARK VMS System (Vertical Mast System)

By activating this function, the tilting process of the mast stops automatically in the vertical position when tilting forward or backward.

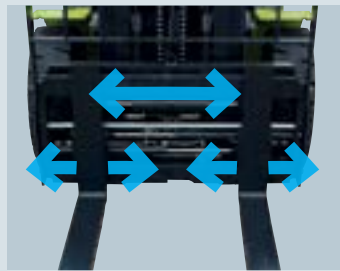
OPTIONAL EQUIPMENT

To adapt your truck to your individual working conditions the following options are available:



Rear LED worklights

Increase visibility for the driver with the rear LED worklight. Boost the noticeability of the truck for anyone in the nearby vicinity of the truck. .



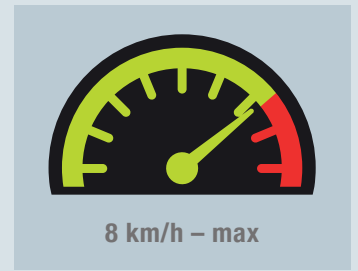
Fork positioners with separate sideshift

Increases the efficiency and flexibility of the GTS-Series. More handling capacity can be achieved especially when the load widths change frequently. CLARK fork positioners have separate sideshift.



Wide drive tyres or Dual drive tyres

The GTS-Series can be equipped with wide drive or dual drive tyres on the drive axle to improve traction and stability when cornering or when handling wider loads.



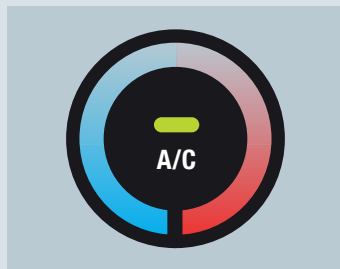
Adjustable maximum speeds

It makes sense to reduce the maximum possible driving speed, especially in areas where there is a lack of visibility or where space is confined. The reduction of the driving speed can be adjusted according to the specific situation.



Blue LED warning lights

The blue LED warning lights provide a visual warning.



Air conditioning (for cabin)

For more productivity on hot days. With good cooling performance, dehumidification and integrated cooling and heating function.



Cabin options

Various cab types are available for the driver's compartment of the GTS-Series.



Rear grab handle with horn

Increased safety and more comfort for the driver, an advantage when frequently driving backwards.



Load capacity:
max. 3300 kg



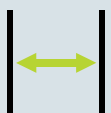
Lifting height:
max. 7315 mm



Driving speed:
Diesel max. 22.6
LPG max. 19.1 km/h



Power drive motor:
Diesel 47.8 kW
LPG 48.7 kW



Working aisle width:
from 3955 mm

SPECIFICATIONS

Product Specifications

1.1 Manufacturer (Abbreviation)		CLARK	CLARK	CLARK	CLARK
Specifications	1.2 Manufacturer's designation	GTS20D	GTS25D	GTS30D	GTS33D
	1.3 Drive unit Diesel, L.P. Gas	Diesel	Diesel	Diesel	Diesel
	1.4 Operator type stand on / driver seated	Driver Seated	Driver Seated	Driver Seated	Driver Seated
	1.5 Load capacity / rated load Q (kg)	2000	2500	3000	3300
	1.6 Load centre distance c (mm)	500	500	500	500
	1.8 Load centre distance, centre of drive axle to fork face x (mm)	455	455	460	475
	1.9 Wheelbase y (mm)	1620	1620	1700	1700
WT	2.1 Service weight kg	3550	3840	4270	4430
	2.2 Axle loading, laden front / rear kg	4800/750	5450/890	6340/930	6870/860
	2.3 Axle loading, unladen front / rear kg	1620/1930	1476/2364	1646/2624	1677/2753
Tyres, Chassis	3.1 Tyre type, P = pneumatic, SE = superelastic 1)	P	P	P	P
	3.2 Tyre size, front	7.00X12-14PR	7.00X12-14PR	28x9x15-14PR	28x9x15-14PR
	3.3 Tyre size, rear	6.00X9-10PR	6.00X9-10PR	6.50X10-12PR	6.50X10-12PR
	3.5 Wheels, number front/rear (x = drive wheels)	2x/2	2x/2	2x/2	2x/2
	3.6 Tread, front (wide/dual) b10 (mm)	996(1075/1204)	996(1075/1204)	1029(1109/1204)	1029(1109/1204)
	3.7 Tread, rear b11 (mm)	904	904	904	904
	Dimensions	4.1 Tilt of upright/fork carriage, α / β °	10/6	10/6	10/6
4.2 Height, upright lowered h1 (mm)		2165	2165	2180	2180
4.3 Freelift h2 (mm)		110	110	110	115
4.4 Lift height 2) h3 (mm)		3195	3195	3195	3165
4.5 Height, upright extended 6) h4 (mm)		4415	4415	4415	4395
4.7 Height overheadguard 7) h6 (mm)		2170	2170	2180	2180
4.8 Seat height h7 (mm)		1219	1219	1219	1219
4.12 Coupling height h10 (mm)		360	360	360	360
4.19 Overall length l1 (mm)		3643	3737	3842	3890
4.20 Length to face of forks l2 (mm)		2573	2667	2772	2820
4.21 Width (wide/dual) b1 (mm)		1185(1265/1629)	1185(1265/1629)	1250(1330/1629)	1250(1330/1629)
4.22 Fork dimensions s • e • l (mm)		45x100x1070	45x100x1070	45x122x1070	50x122x1070
4.23 Fork carriage DIN 15173, A, B		CLASS II	CLASS II	CLASS III	CLASS III
4.24 Fork carriage width (wide / dual drive) b12 (mm)		1041 (1143/1549)	1041 (1143/1549)	1041 (1143/1549)	1143 (1549)
4.31 Ground clearance minimum m1 (mm)		135	135	150	150
4.32 Ground clearance centre of wheelbase m2 (mm)		150	150	165	165
4.34 Aisle width for pallets 1000 x 1200 crossways Ast (mm)	3945	4035	4140	4185	
4.34 Aisle width for pallets 800 x 1200 lengthways Ast (mm)	4145	4235	4340	4385	
4.35 Outside turning radius Wa (mm)	2290	2380	2480	2510	
4.36 Internal turning radius b13 (mm)	825	825	852	889	
Performances	5.1 Travel speed laden/unladen km/h	16,9/18,0	16,5/18,0	17,6/18,8	24,9/23,7
	5.2 Lift speed laden/unladen m/s	0,48/0,54	0,48/0,54	0,48/0,54	0,45/0,50
	5.3 Lowering speed laden/unladen m/s	0,54/0,50	0,54/0,50	0,54/0,50	0,50/0,43
	5.6 Max. drawbar pull laden/unladen 3) N	18405/6465	18470/6135	16945/6635	17740/8020
	5.8 Max. gradeability laden/unladen 3) %	38,9/20,8 (42,8/23,1)	32,1/17,4 (36,6/20,1)	25,2/17,0 (29,0/17,1)	23,3/17,5
	5.10 Service brake	Wet disc brake	Wet disc brake	Wet disc brake	Wet disc brake
I.C. - Engine	7.1 Manufacturer / Type 4)	Yanmar 4TNE98	Yanmar 4TNE98	Yanmar 4TNE98	Yanmar 4TNE98
	7.2 Rated output acc. to SAE J 1349 kW	43	43	43	43
	7.3 Rated speed acc. DIN 70 020 min-1	2200	2200	2200	2200
	7.4 No. of cylinders / displacement /cm3	4/3319	4/3319	4/3319	4/3319
	7.5 Fuel consumption acc. VDI-Cycle Diesel= l/h, L.P.-Gas= kg/h	-	-	-	-
Miscellaneous	8.1 Type of control	Hydrodyn	Hydrodyn	Hydrodyn	Hydrodyn
	8.2 Operating pressure for attachments 8) bar	Adjustable	Adjustable	Adjustable	Adjustable
	8.3 Oil flow for attachments l/min	max. 35	max. 35	max. 35	max. 35
	8.4 Sound level, driver's ear 5) dB (A)	80,5	80,5	80,5	80,5
	8.5 Towing coupling, class/type DIN	PIN	PIN	PIN	PIN

*1) Optional with super-elastic tyres *2) Further lift heights see upright table *3) At friction coefficient $\mu = 0.6$ and laden with 1.6 km/h *4) Diesel = Yanmar (Stage 3a) or ISUZU (Stage 3b) LPG = Hyundai (Stage D) *5) Equivalent permanent sound-pressure level L pAeq, T in accordance with DIN EN 12053 (previously DIN 45635-36) *6) With load backrest *7) Height with cabin and radio antenna + 60mm *8) Max. 140 bar

SPECIFICATIONS

Product Specifications

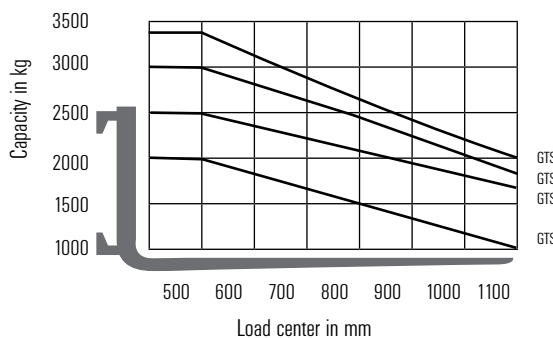
1.1 Manufacturer (Abbreviation)		CLARK	CLARK	CLARK	CLARK
Specifications	1.2 Manufacturer's designation	GTS20L	GTS25L	GTS30L	GTS33L
	1.3 Drive unit Diesel, L.P. Gas	LPG	LPG	LPG	LPG
	1.4 Operator type stand on / driver seated	Driver Seated	Driver Seated	Driver Seated	Driver Seated
	1.5 Load capacity / rated load Q (kg)	2000	2500	3000	3300
	1.6 Load centre distance c (mm)	500	500	500	500
	1.8 Load centre distance, centre of drive axle to fork face x (mm)	465	465	475	480
	1.9 Wheelbase y (mm)	1620	1620	1700	1700
WT	2.1 Service weight kg	3327	3682	4036	4250
	2.2 Axle loading, laden front / rear kg	4639/688	5308/874	6148/888	6561/989
	2.3 Axle loading, unladen front / rear kg	1460/687	1335/2347	1445/2591	1387/2863
Tyres, Chassis	3.1 Tyre type, P = pneumatic, SE = superelastic 1)	P	P	P	P
	3.2 Tyre size, front	7.00X12-14PR	7.00X12-14PR	28x9x15-14PR	28x9x15-14PR
	3.3 Tyre size, rear	6.00X9-10PR	6.00X9-10PR	6.50X10-12PR	6.50X10-12PR
	3.5 Wheels, number front/rear (x = drive wheels)	2x/2	2x/2	2x/2	2x/2
	3.6 Tread, front (wide/dual) b10 (mm)	996(1075/1204)	996(1075/1204)	1029(1109/1204)	1029(1109/1204)
	3.7 Tread, rear b11 (mm)	904	904	904	904
	Dimensions	4.1 Tilt of upright/fork carriage, α / β °	10/6	10/6	10/6
4.2 Height, upright lowered h1(mm)		2165	2165	2180	2180
4.3 Freelift h2(mm)		110	110	110	115
4.4 Lift height 2) h3(mm)		3195	3195	3195	3165
4.5 Height, upright extended 6) h4(mm)		3897	3897	3967	3903
4.7 Height overheadguard 7) h6(mm)		2170	2170	2180	2180
4.8 Seat height h7(mm)		1139	1139	1139	1139
4.12 Coupling height h10(mm)		360	360	360	360
4.19 Overall length l1(mm)		3653	3747	3857	3895
4.20 Length to face of forks l2(mm)		2583	2677	2787	2825
4.21 Width (wide/dual) b1 (mm)		1185(1265/1629)	1185(1265/1629)	1250(1330/1629)	1250(1330/1629)
4.22 Fork dimensions s • e • l (mm)		45x100x1070	45x100x1070	45x122x1070	50x125x1070
4.23 Fork carriage DIN 15173, A, B		CLASS II	CLASS II	CLASS III	CLASS III
4.24 Fork carriage width (wide) b12 (mm)		989	989	1011	1100
4.31 Ground clearance minimum m1 (mm)		135	135	150	150
4.32 Ground clearance centre of wheelbase m2 (mm)		155	155	165	165
4.33 Aisle width for pallets 1000 x 1200 crossways Ast(mm)		3955	4045	4150	4170
4.34 Aisle width for pallets 800 x 1200 lengthways Ast(mm)		4155	4245	4350	4370
4.35 Outside turning radius Wa(mm)		2290	2380	2480	2510
4.36 Internal turning radius b13 (mm)	825	825	852	889	
Performances	5.1 Travel speed laden/unladen km/h	16.5/18.0	16.5/18.0	17.9/19.1	17.8/19.0
	5.2 Lift speed laden/unladen m/s	0.49/0.52	0.49/0.52	0.48/0.52	0.51/0.56
	5.3 Lowering speed laden/unladen m/s	0.54/0.50	0.54/0.50	0.54/0.50	0.50/0.43
	5.6 Max. drawbar pull laden/unladen 3) N	19829/9551	19730/9129	21074/10865	20515/10385
	5.8 Max. gradeability laden/unladen 3) %	43.0/24.0	33.0/21.0	29.0/22.6	24.5/19.5
	5.10 Service brake	Wet disc brake	Wet disc brake	Wet disc brake	Wet disc brake
I.C. - Engine	7.1 Manufacturer / Type 4)	Hyundai / THETA2.4	THETA2.4	THETA2.4	THETA2.4
	7.2 Rated output acc. to SAE J 1349 kW	48.7	48.7	48.7	48.7
	7.3 Rated speed acc. DIN 70 020 min-1	2500	2500	2500	2500
	7.4 No. of cylinders / displacement /cm3	4/2359	4/2359	4/2359	4/2359
	7.5 Fuel consumption acc. VDI-Cycle Diesel= l/h, L.P.-Gas= kg/h	-	-	-	-
Miscellaneous	8.1 Type of control	Hydrodyn	Hydrodyn	Hydrodyn	Hydrodyn
	8.2 Operating pressure for attachments 8) bar	Adjustable	Adjustable	Adjustable	Adjustable
	8.3 Oil flow for attachments l/min	-	-	-	-
	8.4 Sound level, driver's ear 5) dB (A)	79	79	79	79
	8.5 Towing coupling, class/type DIN	Pin	Pin	Pin	Pin

*1) Optional with super-elastic tyres *2) Futher lift heights see upright table *3) At friction coefficient $\mu = 0.6$ and laden with 1.6 km/h *4) Diesel = Yanmar (Stage 3a) or ISUZU (Stage 3b) LPG = Hyundai (Stage 0) *5) Equivalent permanent sound-pressure level L pAeq, T in accordance with DIN EN 12053 (previously DIN 45635-36) *6) With load backrest *7) Height with cabin and radio antenna + 60mm *8) Max. 140 bar

Performance may vary +5% and -10% due to motor and system efficiency tolerance. The performance shown represents nominal values which may be obtained under typical operating conditions of a machine. CLARK products and specifications are subject to change without notice.

GENERAL DATA

Truck Capacities Capacity at different load centres



Note:

The listed capacities are valid only for the standard upright in vertical position with standard fork carriage and standard forks, up to max. lifting height of 3195 mm for GTS20/25/30 and 3165mm for GTS33. The centre of gravity of the load may be displaced by max. 100 mm against the longitudinal centre plane of the truck. Load centre is determined from top and front face of the forks. The values are based on a 1000 mm cube load configuration with the centre of gravity at the true centre of the cube. With upright tilted forward lower capacity values are valid. Attachments, longer forks, exceptional load dimensions and higher lifting heights can reduce the capacity. Please talk to your CLARK dealer if you require further information.

Upright table GTS20/25

	Maximum fork height (h3)	Mast lowered (h1)	Mast extended		Free lift(h2)	
			with load backrest	without load backrest	with load backrest	without load backrest
Standard	mm	mm	mm	mm	mm	mm
	2015	1575	3235	2611	110	110
	2575	1855	3795	3171		
	2875	2005	4095	3471		
	3195	2165	4415	3791		
	3300	2218	4521	3897		
	3500	2318	4720	4096		
	3725	2455	4944	4320		
	3860	2530	5080	4456		
	4165	2800	5384	4760		
	4380	3000	5600	4976		
	4620	3230	5840	5216		
5170	3495	6390	5766			
Triplex	3860	1855	5079	4483	636	1232
	4320	2005	5539	4943	786	1382
	4500	2100	5719	5123	881	1477
	4800	2165	6019	5423	946	1542
	5210	2305	6429	5833	1086	1682
	5520	2455	6739	6143	1236	1832
	5740	2530	6959	6363	1311	1907
	6100	2690	7319	6723	1471	2067
	6370	2800	7589	6993	1581	2177
	6830	3000	8049	7453	1781	2377
Hi-Lo	2935	2005	4155	3559	786	1382
	3255	2165	4475	3879	946	1542
	3530	2305	4750	4154	1086	1682
	3760	2455	4980	4384	1236	1832
	3910	2530	5128	4532	1311	1907

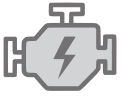
Upright table GTS30

Mast type	Maximum fork height (h3)	Mast lowered (h1)	Mast extended (h4)		Free lift (h2)	
			with load backrest	without load backrest	with load backrest	without load backrest
Standard	mm	mm	mm	mm	mm	mm
	2015	1590	3235	2682	110	110
	2575	1870	3795	3242		
	2875	2020	4095	3542		
	3195	2180	4415	3862		
	3300	2233	4521	3968		
	3500	2333	4720	4167		
	3725	2470	4944	4391		
	3860	2545	5080	4527		
	4165	2815	5384	4831		
	4380	3015	5600	5047		
	4620	3245	5840	5287		
	5170	3510	6390	5837		
Triplex	3860	1870	5079	4551		
	4320	2020	5539	5011	801	1329
	4500	2115	5719	5191	896	1424
	4800	2180	6019	5491	961	1489
	5210	2320	6429	5901	1101	1629
	5520	2470	6739	6211	1251	1779
	5740	2545	6959	6431	1326	1854
	6100	2705	7319	6791	1486	2014
	6370	2815	7589	7061	1596	2124
	6830	3015	8049	7521	1796	2324
	7315	3245	8534	8006	2026	2554
	Hi-Lo	2935	2020	4155	3627	801
3255		2180	4475	3947	961	1489
3530		2320	4750	4222	1101	1629
3760		2470	4980	4452	1251	1779
3910		2545	5128	4600	1326	1854

Upright table GTS33

	Maximum fork height (h3)	Mast lowered (h1)	Mast extended		Free lift(h2)				
			with load backrest	without load backrest	with load backrest	without load backrest			
Standard	mm	mm	mm	mm	mm	mm			
	1985	1590	3215	2733	115	115			
	2545	1870	3775	3293					
	2845	2020	4075	3593					
	3165	2180	4395	3913					
	3300	2233	4526	4044					
	3500	2333	4726	4244					
	3590	2470	4819	4337					
	3725	2545	4955	4473					
	4030	2815	5255	4773					
	4245	3015	5471	4989					
	4485	3245	5711	5229					
	5035	3510	6261	5779					
	Triplex	3680	1870	4899			4439	651	1111
		4140	2020	5359			4899	801	1261
4620		2180	5839	5379			961	1421	
5030		2320	6249	5789	1101	1561			
5340		2470	6559	6099	1251	1711			
5560		2545	6779	6319	1326	1786			
5820		2705	7139	6679	1486	1946			
6190		2815	7409	6949	1596	2056			
6650		3015	7869	7409	1796	2256			
7135		3245	8354	7894	2026	2486			

Performance may vary +5% and -10% due to motor and system efficiency tolerance. The performance shown represents nominal values which may be obtained under typical operating conditions of a machine. CLARK products and specifications are subject to change without notice.



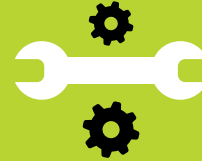
FORKLIFT TRUCK WITH DIESEL OR LPG DRIVE

GTS20D | GTS25D | GTS30D | GTS33D
GTS20L | GTS25L | GTS30L | GTS33L



GLOBAL PRESENCE

CLARK products are in operation all around the world.



RELIABLE SPARE PARTS SERVICE

CLARK has state of the art distribution warehouses around the world



COMPREHENSIVE DEALER NETWORK

Over 550 sales & distribution partners in more than 90 countries ensure a high level of availability of our products and services.



EXCELLENT QUALITY

CLARK is the forerunner in high-quality standards and innovative product developments.



CLARK International South Pacific

30 Salisbury Road
Hornsby, NSW 2077 Australia
Tel: 1800 005 747
www.clarkforklifts.com.au

CLARK International Singapore

2 Venture Drive, Vision Exchange
Singapore, 608526
Tel: 65 6863 4083
www.clarkisp.com.au