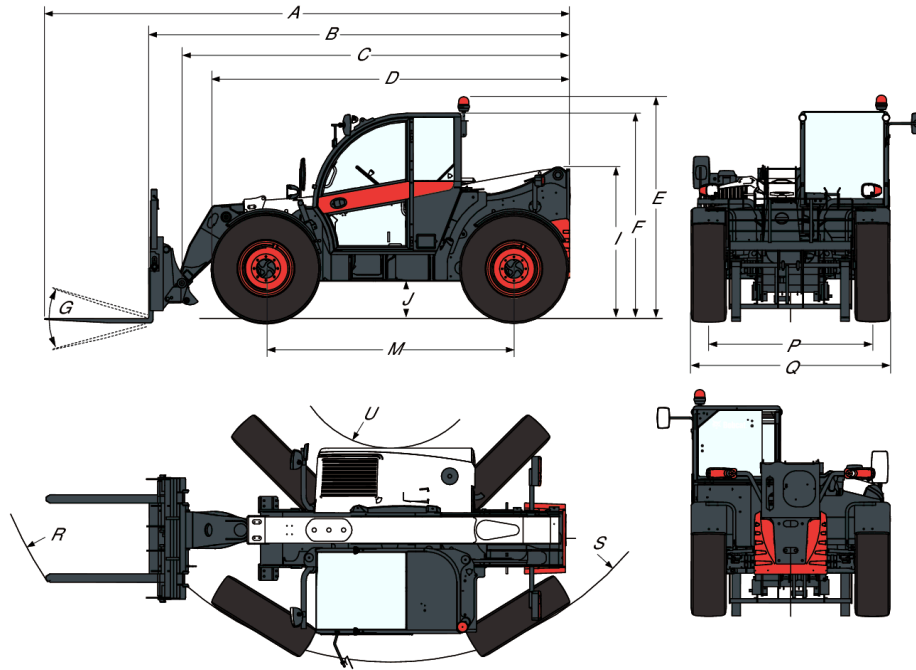


## Dimensions



(A) Overall length (with forks)	6074.0 mm
(B) Overall length (fork frame)	4869.0 mm
(C) Overall length (without attachment)	4763.0 mm
(D) Overall length (Front tire to rear of machine)	4058.0 mm
(E) Overall height (with rotating beacon)	2477.0 mm
(F) Overall height	2290.0 mm
(G) Carriage rotation angle	135.0°
(I) Height to back of the machine	1668.0 mm
(J) Ground clearance	346.0 mm
(L) Front axle to front carriage	1356.0 mm
(M) Wheelbase	2870.0 mm
(N) Rear axle to back of machine	643.0 mm
(O) Operator cab outside width	1013.0 mm
(P) Track width (front & rear)	1895.0 mm
(Q) Width over standard tyres	2300.0 mm
(R) External turning radius (with forks spaced 1040 mm apart)	4925.0 mm
(R) External turning radius (with forks spaced 1360 mm apart)	5015.0 mm
(S) External turning radius (at tyres)	3714.0 mm
(U) Internal turning radius	1092.0 mm
(-) Operator cab inside width	900.0 mm

## Performance

---

Drawbar pull	7900 daN
Rated capacity	3800 kg
Capacity (at max. height on tyres)	3500 kg
Capacity (at max. reach on tyres)	1500 kg
Lifting height — on tyres	6889.0 mm
Max. reach on tyres	4002.0 mm

## Cycle Times

---

Lift time - no load	4.9 s
Lower time - no load	4.3 s
Telescope in time at max. reach - no load	4.8 s
Telescope in time at max. height - no load	4.8 s
Telescope out time at max. reach - no load	4.9 s
Telescope out time at max. height - no load	4.7 s
Crowding time	2.3 s
Dumping time	2.5 s

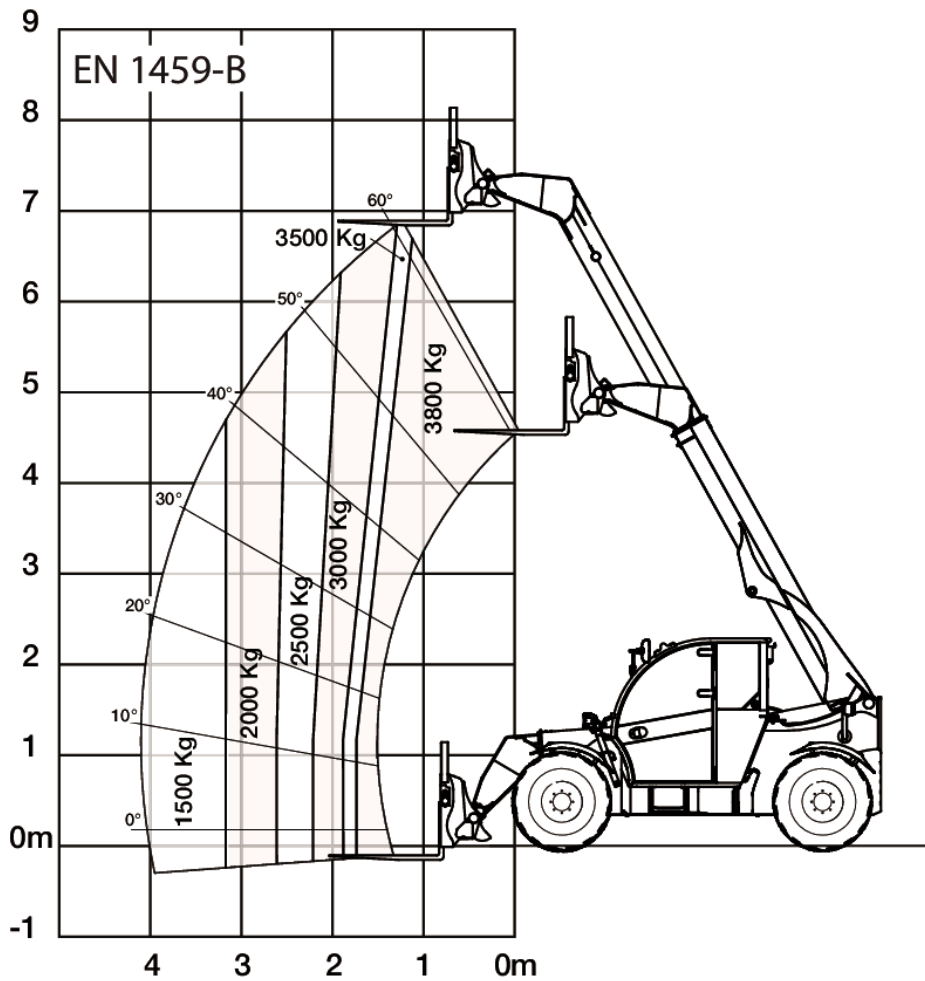
## Weights

---

Weight (unladen)	7320 kg
Front axle weight unladen	2985 kg
Rear axle weight unladen	4335 kg
Total weight with pallet frame and forks	7630 kg
Front axle weight with pallet frame and forks	3440 kg
Rear axle weight with pallet frame and forks	4190 kg
Weight with pallet frame, forks and rated load	11430 kg
Front axle weight with pallet frame, forks and rated load	9615 kg
Rear axle weight with pallet frame, forks and rated load	1815 kg

**Load Charts**

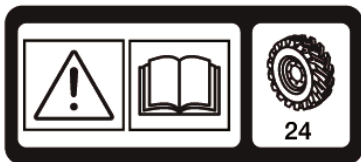
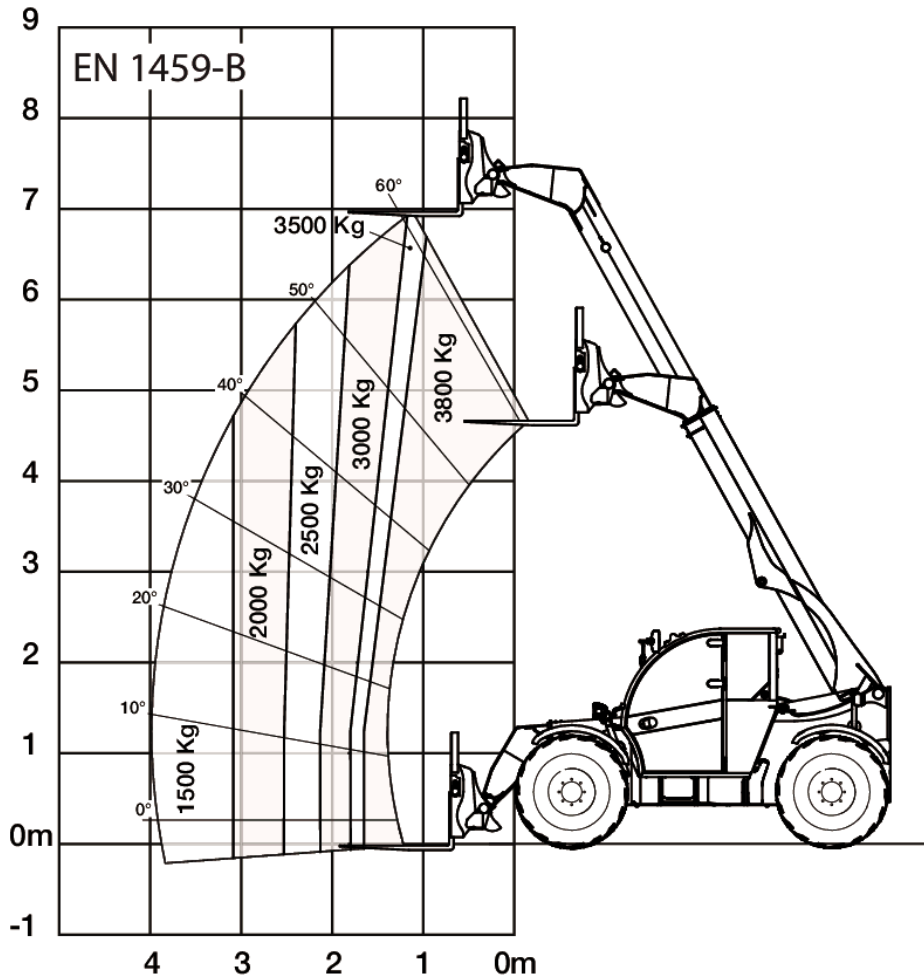
With forks on 20 inch tyres


**TL38.70HF**  
 TL38.70 TL38.70X


99256 G7

7296122

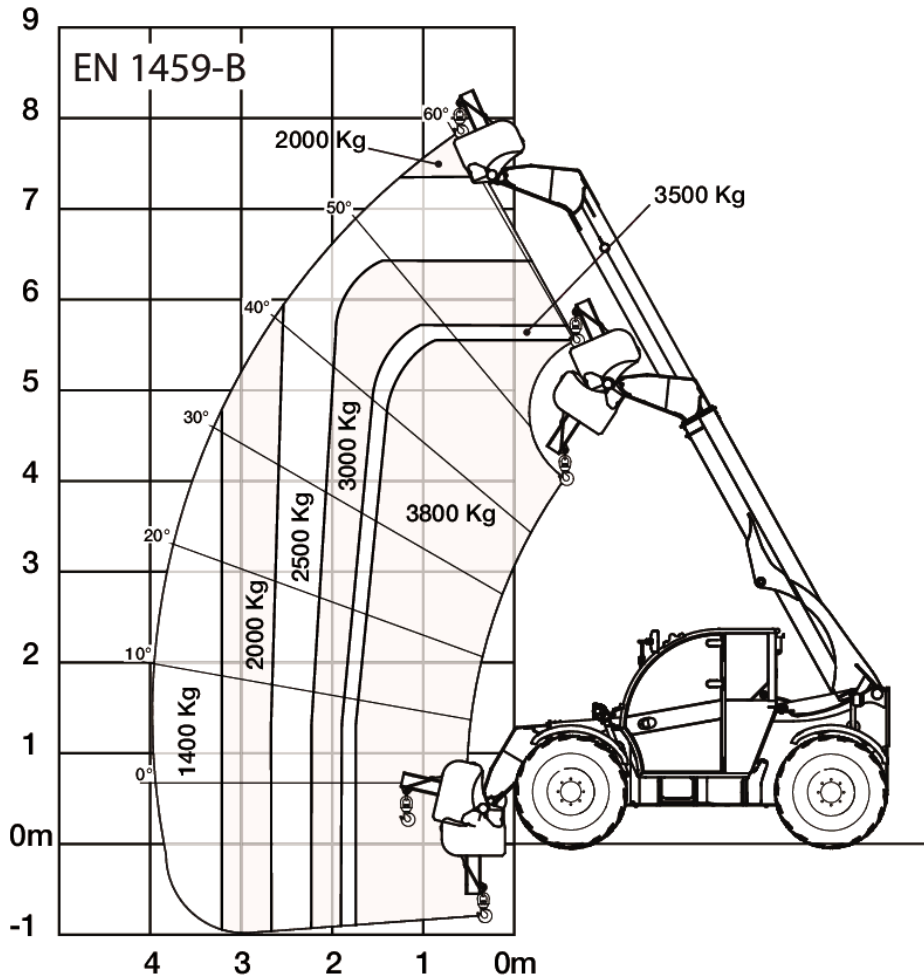
With forks on 24 inch tyres


**TL38.70HF**  
 TL38.70 TL38.70X


99258 G7

7296123

With jib on 20 or 24 inch tyres


**TL38.70HF**  
*TL38.70 TL38.70X*


99169 G7

7296130

## Engine

Make / Model	Perkins / 1104D-44TA
Fuel	Diesel
Cooling	Water
Rated power (ISO 14396:2002) at 2200 RPM	130.0 HP
Rated power (ISO 14396:2002) at 2200 RPM	96.5 kW
Rated speed	2200.0 RPM
Maximum torque at 1400 RPM	516.0 Nm
Number of cylinders	4
Displacement	4.40 L
Bore	105.0 mm
Stroke	127.0 mm
Lubrication	Gear pump pressure
Crankshaft ventilation	Open breathing
Air filter	Dry replaceable cartridge with safety element
Ignition	Diesel compression

## Electrical

Alternator	110 A
Battery	140 Ah
Starter	4.2 kW

## Hydraulic System

Pump type	LS piston pump
Pump capacity	190.00 L/min
Relief valve pressure setting	255.00 bar
Control valve	Close center with flow sharing & flow compensators technology
Hydraulic filter	Full flow filtration
Auxiliary flow	150.00 L/min

## Drive System

Transmission	Hydrostatic with electronic regulation
Main drive	Hydrostatic motor + 2 speed gearbox

## Traction

Standard tyres	SOLIDEAL 405/70-20 14PR
Optional tyres	SOLIDEAL 400/80-24 /20PR TMR4
Optional tyres	DUNLOP 405/70R20 168A2 152J MPT SPT9
Optional tyres	MICHELIN 400/80-24 162A8 IND TL POWER CL
Optional tyres	MICHELIN 460/70R24 159A8/159B IND TL XMCL
Optional tyres	MICHELIN 500/70R24 164A8/164B IND TL XMCL
Optional tyres	DUNLOP 405/70R24 168A2 152J MPT SPT9
Optional tyres	NOKIAN 460/65R24 156A8/151D TRI STEEL TL
1st gear / low range	6.0 km/h
2nd gear / low range	12.0 km/h
1st gear / high range	18.0 km/h
2nd gear / high range	40.0 km/h

## Brakes

Engine braking	Hydrostatic
Parking and emergency brake	Passive brake
Service brake	Oil-immersed disks

## Steering

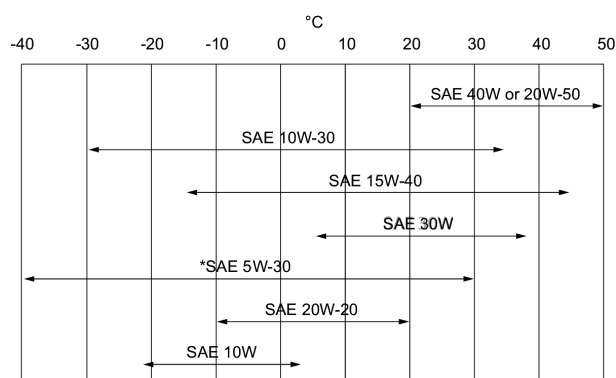
Steering pump	Priority valve on equipment pump
Steering modes	2WS / 4WS / CRAB

## Fluid Capacities

Axles and reduction gears front / rear	9.1/9.1 L
Cooling system	15.00 L
Engine lubrication plus oil filter	8.50 L
Fuel tank	138.00 L
Hydraulic reservoir	59.00 L
Hydraulic system plus reservoir	105.00 L
Gear Box	1.60 L

## Fluid Specifications

Coolant	Ethylen Glycol Mix -37°C (34.6°F)
Engine oil	List of approved oils: 20°C to 50°C : SAE40W or 20W-50 5°C to 38°C : SAE30W -30°C to 35°C : SAE10W-30 -15°C to 45°C : SAE15W-40 -40°C to 30°C : SAE5W-30 -10°C to 20°C : SAE20W-20 -20°C to 3°C : SAE10W



Fuel	Diesel or fuel
Brake fluid	None. Brakes use hydraulic system pressure
Hydraulic fluid	MS68
Transmission oil	ELF SF3 / TOTAL DYNATRANS FR
Grease for hinges and boom gliders	TOTAL MULTIS EP2

## Controls

Engine	Foot accelerator pedal
--------	------------------------

Starting  
Front auxiliary  
Hydraulics lift and tilt  
Hydraulics telescope in and telescope out  
Service brake  
Secondary brake  
Parking brake  
Steering

Speed range and reverse selection

4WD/2WD/parallel drive selection

Auxiliary pressure release

Key-type starter switch and shutdown.  
Variable thumbwheel on joystick  
Joystick electronic  
Variable thumbwheel on joystick  
Pedal-activated wet multi-disk on front axle  
Passive brake  
Passive brake  
Proportional hydraulic steering via a conventional steering wheel  
Switches for hydrostatic motor and gear ratios, and switch on joystick or lever for FNR  
Three-position switch on the right-hand console  
Bobcat coupler

## Instrumentation

---

The following functions are monitored by a combination of gauges and warning lights in the operator's line of sight. The system alerts the operator of monitored malfunctions by way of audible and visual indicators.

- Gauges
  - Engine RPM
  - Total operating hours.
  - Job hours
  - Boom angle
  - Vehicle speed (for 40 km/h opt)
  - Fuel gauge
  - Engine coolant temperature gauge
- Indicators
  - Front and rear wheel alignment status
  - Headlight full beam
  - Headlight low beam
  - Position lights
  - Left and right turn
  - Trailer turn
  - Parking brake
  - Longitudinal stability level
  - Windscreen wipers
  - Work lights
  - Flashing warning light
  - Hazard warning lights
  - Gear speed choice
  - Hydraulic function lock
  - Rear fog lights
  - Heater fan
- Warning lights
  - Hydraulic fluid over-temperature
  - Engine coolant over-temperature
  - Low oil pressure
  - Battery not charging
  - Longitudinal stability alarm

## Serviceability

---

Access is available to the following through the side engine cover and access panel:

- Air cleaner



- Fuel filter
- Engine oil filter
- Engine oil dipstick
- Starter
- Alternator

Other accesses:

Access is available to the following within the cab:

- Glass washer fluid
- Fuses, diodes and relays
- ISL control box

Engine cover has a lock for vandal-proofing and is equipped to hold open while servicing

Easy access to all grease points

### Standard Features

---

- Frame and Telescopic boom:
- Quicktatch carriage with manual attachment lock
- Auxiliary hydraulic line with additional drain line on boom head with Fast Connect System (FCS)
- Heavy Duty axles with Limited Slip Differential on front axle (45%)
- Box-welded frame with shielded bottom plate to protect vital parts
- Boom cushion retract and lift
- Complete road lights (front & rear)
- Right and left side mirrors
- \*\*\*\*\*
- Cabin and main functions:
- Pillar free rear panoramic visibility (patented cab design)
- Cabin with full glass window door
- Full tinted glass
- ROPS/FOPS operator cabin
- Automatic parking brake
- Work lights on top of the cabin (2 front + 1 rear)
- Rotating beacon
- Front and rear wipers with washer
- Inner rear view mirror
- Deluxe steering wheel
- Adjustable steering column
- Mechanical Suspension Seat
- Heating, demisting and ventilation
- Back-up alarm
- Aggravating Movements Arrester (AMA) compliant with EN15000
- CAN Bus technology with auto-diagnostic system
- Multifunction LCD screen
- Multifunctional joystick with proportional controls and forward/reverse drive
- Smart Handling System (SHS) to adjust the speed of all boom movements (lifting, telescoping, tilting)
- Speed Management System (SMS) to adjust max drive speed whatever engine RPM
- Auxiliary Flow Management (AFM) to adjust and engage a continuous hydraulic flow
- 3 steering modes (2WS /4WS / CRAB) with semi-automatic wheel realignment (manual mode still available)
- \*\*\*\*\*
- Drive/Engine/Hydraulic:
- Hydrostatic transmission with electronic regulation
- 2 hydrostatic speeds (turtle / rabbit) with auto-shift + 2 speed gear box
- 30 km/h max drive speed with 24" tyres (may vary according to applicable regulations)
- Inching function combined with brake pedal (slow drive speed without changing engine speed)

- Standard tyres - set of 4 x 405/70-20"
- Turbo-charged engine - Perkins Stage IIIA - 100 hp / 410 Nm
- Electronic fuel injection with high pressure common rail - No DPF After treatment system
- Electronic Battery Disconnection (EBD)
- Cold start (high capacity battery 140 Ah able to start at -20 °C)
- Load Sensing pump 190 l/min with flow sharing distributor
- \*\*\*\*\*
- 3 year warranty or 3000 hours (refer to the Bobcat standard warranty policy for terms and conditions)

## Options

---

- Air conditioning
- Boom stop
- Custom colour
- Fire extinguisher
- Forward/Reverse control on Steering Wheel Lever (no longer on joystick)
- Lockable fuel cap
- Loudspeaker & radio ready
- PVC Document holder
- Pintle tow hitch (including rear electric socket)
- Protective grill for windshield (front and roof)
- Rear Flat Mirror
- Roof window wiper
- Sun visor
- Support for vehicle registration plate
- Wheel wedge
- Work lights on boom
- Basic tow hitch
- High comfort air suspension seat
- Keyless ignition (start/stop with keypad)
- Michelin tyres - set of 4 x 400/80-24" 162A8 IND TL POWER CL
- Quicktack carriage with hydraulic attachment lock (boom wiring harness mandatory)
- Rotating tow hitch (including rear electric socket)
- Standard engine ignition (with key) with additional keypad security
- Manitou carriage with hydraulic attachment lock (boom wiring harness mandatory)
- Manitou carriage with manual attachment lock
- Basic option tyres - set of 4 x 400/80-24"
- Blue lights for henhouses
- Boom suspension
- Dunlop tyres - set of 4 x 405/70-20" SPT9 MPT (SEMI INDUSTRIAL)
- Dunlop tyres - set of 4 x 405/70-24" SPT9 MPT (SEMI INDUSTRIAL)
- Forward/Reverse control on joystick and steering wheel
- Front tow hitch
- Fan inverter with manual & auto modes
- Rear auxiliary line
- Rotating tow hitch with height adjustment (auto-lock/German style) (including rear electric socket)
- Rotating tow hitch with height adjustment (manual locking) (including rear electric socket)
- Trailer brake valve (not available for Germany & Italy)
- Transmission 40km/h (max speed with 24" tyres)
- Cyclonic air prefilter
- Michelin tyres - set of 4 x 460/70R24" XMCL (AGRICULTURAL)
- Michelin tyres - set of 4 x 500/70R24" XMCL (AGRICULTURAL) (Except overseas countries - Container shipping)
- Nokian recycling tyres - set of 4 x 480/65R24" TRI STEEL (RECYCLING)

- Arm rest
- Boom wiring harness and electric connectors
- Tool box
- Hydraulic pick-up tow hitch (including rear electric socket) (rear flat mirror mandatory)

### Attachments

---

- |                         |                          |
|-------------------------|--------------------------|
| • Bale Forks            | • Grapples, TLS          |
| • Bale Squeeze Handlers | • Light Material Buckets |
| • Digging Buckets       | • Pallet Forks, Standard |

### Environmental

---

Operator noise level (LpA) (EN 12053)	77 dB(A)
Level of acoustic power (LWA)	107 dB(A)
Whole body vibration (EN 13059)	1.20 ms <sup>-2</sup>

### Safety

---

Seat belt, standard	Should always be worn when operating the machine
Fully enclosed operator cab. standard	
Boom stop, standard	Enclosed operator cab. Meets SAE-J1040 and ISO 3471 for Roll Over Protective Structure (ROPS) and SAE-J1043 and ISO 3449 for Falling Objects Protection Structure (FOPS).
Parking brake, standard	Use for servicing if boom is raised
Grab handles, standard	Always set brake when leaving the machine
Rear window, standard	Should always be used when entering/exiting the telescopic
Front and rear work lights, standard	For emergency exit
Back-up alarm, standard	Use for indoor and low light operation
Rated load capacity charts, standard	For use in jobs with low visibility. Alarm sounds when operated in reverse.
Anti-tipping device, standard	Attached inside the cab. Provide rated load capacities for loads and attachments.
Emergency button, standard	Switches off the engine and blocks boom movements.
Operator handbook, standard	
Rotating beacon, standard	